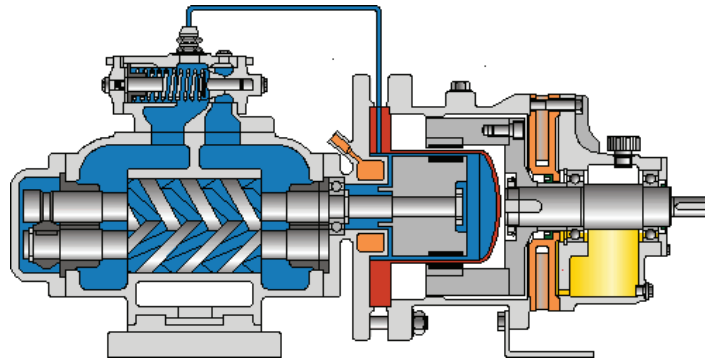


# SLM-LN MAGNETIC DRIVE SCREW PUMPS

## Screw Pump



## Technical Data

- Flow rates up to 1250 GPM
- Total delivery heads up to 575 feet
- Temperature ratings from +15°F (-10°C) to +575°F (+300°C)
- Pressure rating up to 580 PSIG

## Construction

- horizontal screw pump
- permanent magnet drive system, no shaft duct
- separation of liquid chamber/atmosphere by means of an isolation shell
- synchronous drive transmitted by inner and outer magnet systems
- internal bearings made of pure, sintered silicon carbide, alpha grade, liquid lubricated, for absorption of radial and axial loads
- bearings of outer magnet carrier: deep groove ball bearing
- two screw spindles, rotating towards each other
- spindles supported in bearing bushings
- hydraulic compensation of axial force

## Materials

casing: Nodular Cast Iron  
spindle: Hardened Steel  
isolation shell: 316 Ti/Hastelloy C4  
inner magnet carrier: 316 Ti/Hastelloy C4  
internal bearings: Carbon/Silicon Carbide,  
Alpha Grade  
bearing frame assembly: Cast Steel/Nodular Cast Iron  
magnets: Rare Earth Samarium Cobalt

## Applications

Refineries  
Chemical and petrochemical  
industries  
Synthetic and rubber industries  
Mineral oil industry  
Paint and lacquer industries

## Pumping

isocyanates  
polycarbonates  
oils and fats  
monomers  
polyesters  
resins  
viscous liquids



**Head Office:**  
6120 Davies Road  
Edmonton, AB  
T6E 4M9

Phone: (780) 485-2010 • Toll Free: (866) 707-7867  
Fax: (780) 485-1938  
• Calgary • Drayton Valley • Lethbridge  
[www.rotatingright.com](http://www.rotatingright.com)