

## PERISTALTIC PUMPS

### PeriFlo RBT Series

#### FEATURES

- *Direct Connected - No Alignment*
- *Sealless - Easy Maintenance*
- *Dry Run without Damage*
- *Abrasion Resistant*
- *Commercial Gear Drives*
- *Cartridge-Style Bearing Assembly*
- *Self-Priming to 27 ft.*
- *Metering Accuracy +/- 1%*
- *Reversible Rotation*
- *Sanitary FDA Designs Available*



#### 5 Models

- *Max Flow: 440 GPM*
- *Hose System: Shoes*
- *Max Tube PSI: 222 PSI*

PeriFlo is a leading supplier of peristaltic pumps, pump technology and pump systems to the industrial and municipal markets. Established in 2001, PeriFlo today provides 20 pump models, complete engineered pump systems and UL Listed custom controls. They are marketed through a highly trained network of more than 40 industrial distributors and municipal representatives across the US and Canada.

Headquarters, design, assembly and testing operations are located in a modern 16,000 sq. ft. facility conveniently located near Cincinnati, Ohio. With over 25 years of peristaltic pump experience, PeriFlo's applications engineers are readily available to assist with pump selection and/or system design, aimed at assuring maximum success in the most demanding pump installations.

### PeriFlo Controls



#### SCADA Ready Controls Features:

- Large, Bright, Easy to Read LCD Display
- Selectable Local or Remote Operation
- Start, Stop, Reset, Prime, and Menu Function Keys.
- Bright LED Status Lights
- Simple Calibration Routines
- UL Listed NEMA 4X Design

#### Inputs:

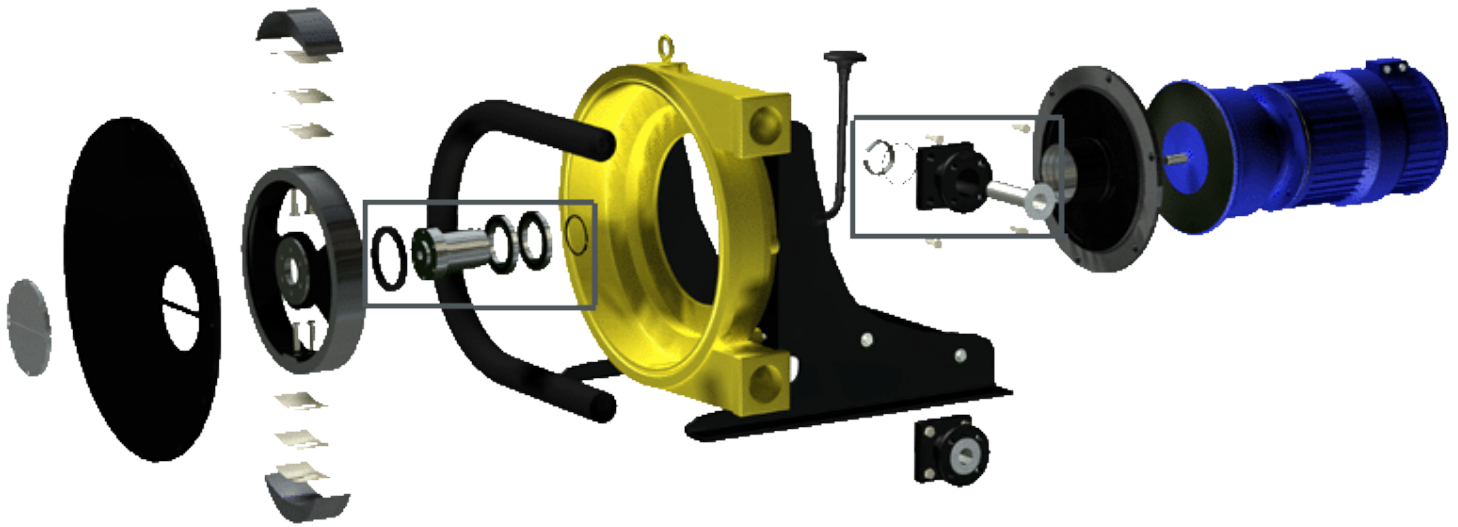
- Remote Start/Stop
- Remote Forward/Reverse
- 4-20mA Speed Control
- 4-20mA Speed Trim/Scaling

#### Outputs:

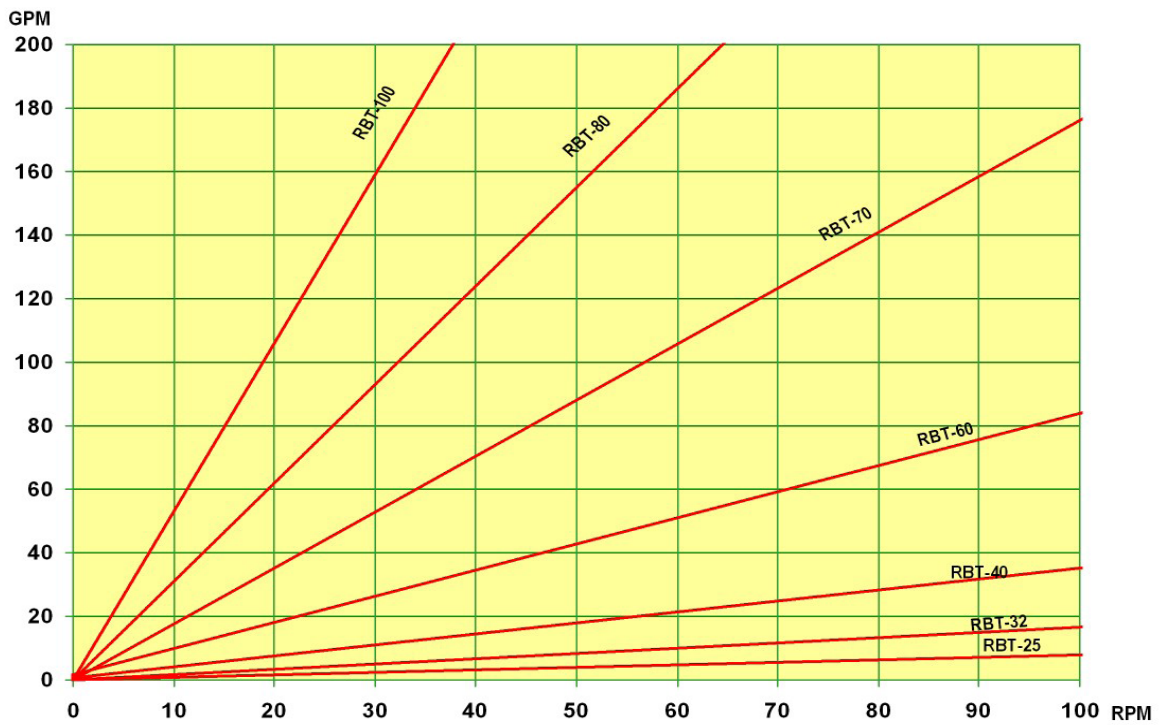
- Remote/Manual Status
- Run/Stop Status
- 4-20mA Speed Signal
- Tube Failure & General Fault

# PERIFLO

## RBT Exploded View



## RBT Performance



**Head Office:**  
6120 Davies Road  
Edmonton, AB  
T6E 4M9

Phone: (780) 485-2010 • Toll Free: (866) 707-7867  
Fax: (780) 485-1938  
• Calgary • Drayton Valley • Lethbridge  
[www.rotatingright.com](http://www.rotatingright.com)