

ROTATING RIGHT

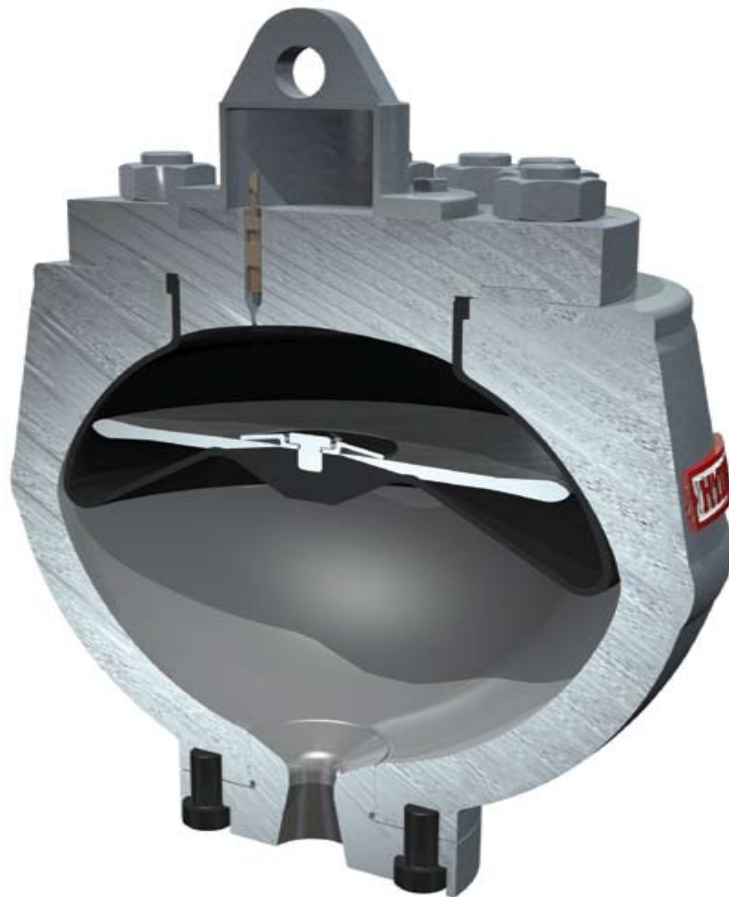
HYDRIL K PULSATION DAMPENERS

Hydril K

Unmatched Large-Volume Performance



Pressure Control Equipment: Pulsation Dampeners



APPLICATIONS & BENEFITS

Manufactured to meet the most demanding large-volume, high-slurry pump applications, Hydril K pulsation dampeners offer outstanding performance for onshore and offshore drilling, airport fueling systems, tank truck and marine loading racks, fire water systems, sewage lines and other large scale pulsation and surge control applications. With many ANSI and API connections available standard, K dampeners allow for quick installation, long service life and these additional benefits:

- Easy to precharge and maintain. Charging assemblies are included free with every purchase.
- Outstanding durability with standard hydrogenated nitrile elastomer.
- At-a-glance precharge and bladder verification with sight glass option.
- Reduced downtime with field-replaceable diaphragms.

KEY FEATURES

Introduced more than 50 years ago, Hydril K accumulators/dampeners have

earned their reputation for unmatched dependability and durability. The difference is in the design: A torispherical body shape results in smoother flow and longer diaphragm life. A stabilizer disk enhances reliability. And a field-replaceable bottom plate eliminates costly shop repairs for greater efficiency and economy. In addition, Hydril K units:

- **Are available in a variety of capacities,** from 10 to 80 gallons.
- **Meet a variety of specifications.** K dampeners are manufactured to DNV, CRN, CE and the ATEX directive, ABS-CDS, as well as ISO 9001.
- **Include ASME code stamping** standard on most sizes, and pressure ratings.

THE HYDRIL K ADVANTAGE

Unmatched in quality and reputation, effective under the

toughest field conditions, proven onshore and off, Hydril K is engineered for reliability, durability, long life and ease of operation. By manufacturing our own elastomers, we also offer unrivaled quality control—delivering by far the best materials, compatibility and availability in the industry.

ENGINEERING DATA

10 (GAL) CAPACITY

Model No.	Dimensions (inches)			Weight (lbs)
	Width	Shell Height	Overall Height	
K10-275	23	23.75	31.1	440
K10-1440	23	23.75	31.1	440
K10-3000	23	23.75	31.1	950
K10-5000	23	23.75	31.1	950

20 (GAL) CAPACITY

Model No.	Dimensions (inches)			Weight (lbs)
	Width	Shell Height	Overall Height	
SS-20-275	24	20.75	27	450
K20-1440	25.1	26.7	34.1	825
K20-3000	28.5	28.15	35.53	2,145
K20-5000	28.5	28.15	35.53	2,145
20-7500	30.5	29.5	37.6	3,150

80 (GAL) CAPACITY

Model No.	Dimensions (inches)			Weight (lbs)
	Width	Shell Height	Overall Height	
K80-275	38.29	37.31	44.69	2,575
K80-720	38.29	37.31	44.69	2,575
K80-1440	38.29	37.31	44.69	2,575
K80-2000	41.5	38.82	46.2	3,150
K80-3000	41.5	38.82	46.2	3,150
K80-3705	41.5	38.82	46.2	3,150



Head Office:
6120 Davies Road
Edmonton, AB
T6E 4M9

Phone: (780) 485-2010 • Toll Free: (866) 707-7867
Fax: (780) 485-1938
• Calgary • Drayton Valley • Lethbridge
www.rotatingright.com

