

ROTATING RIGHT

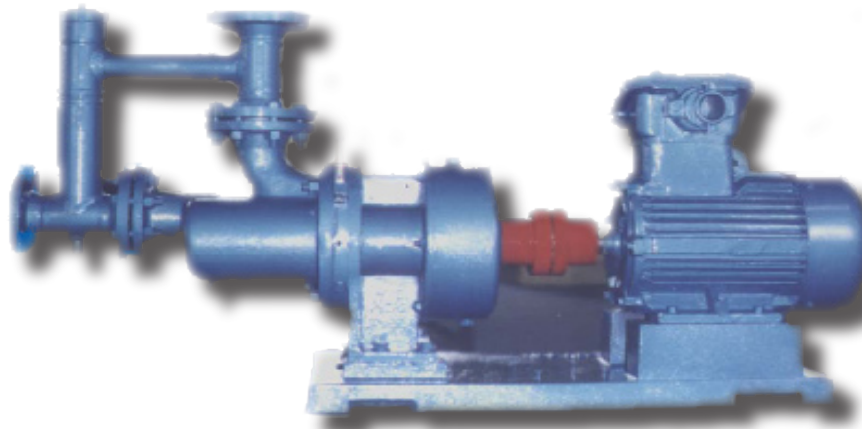
W.KSE SERIES TWIN SCREW PUMPS

W.KSE - SERIES

MANUFACTURED BY: **CTP - TIANJIN PUMPS & MACHINERY GROUP CO LTD.**

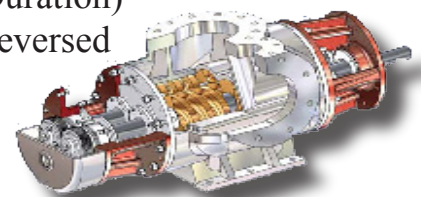
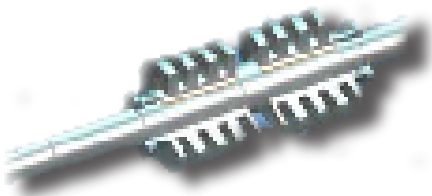
The W.V series Twin Screw Pump is a horizontal mounted rotary screw pump used in the Petroleum, Chemical and Ship Building Industries to transfer various viscosity, neutral and corrosive liquids as well as transfer liquid mixtures.

The W.V Series pump can deliver heavy crude oil, residual oil, pitch, bunker fuel, lubricating oil, paint, glycerin, sea water and many other viscous and corrosive liquids.



FEATURES:

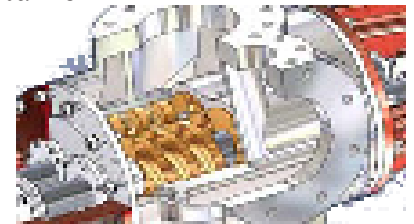
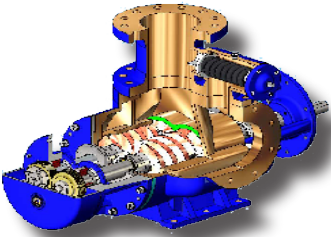
- Two Piece shaft & Screw Design
- Self Priming
- Dry Run Capabilities (Short Duration)
- Pumping Direction May Be Reversed
- Low NPSHr
- Low Pulsation
- Flow Proportional To Speed
- Easy Maintenance Design
- Handles High Viscosity Fluids
- Pumps Designs for Virtually Any Liquid



W.V - SERIES

HOW IT WORKS:

- Intermeshing screws rotate within the pump housing creating fluid chambers.
- The fluid is conveyed from the suction side to the discharge of the pump.
- This is done without the screws contacting the pump housing.
- Pumped liquids may be as viscous as bitumen or have the properties of water.



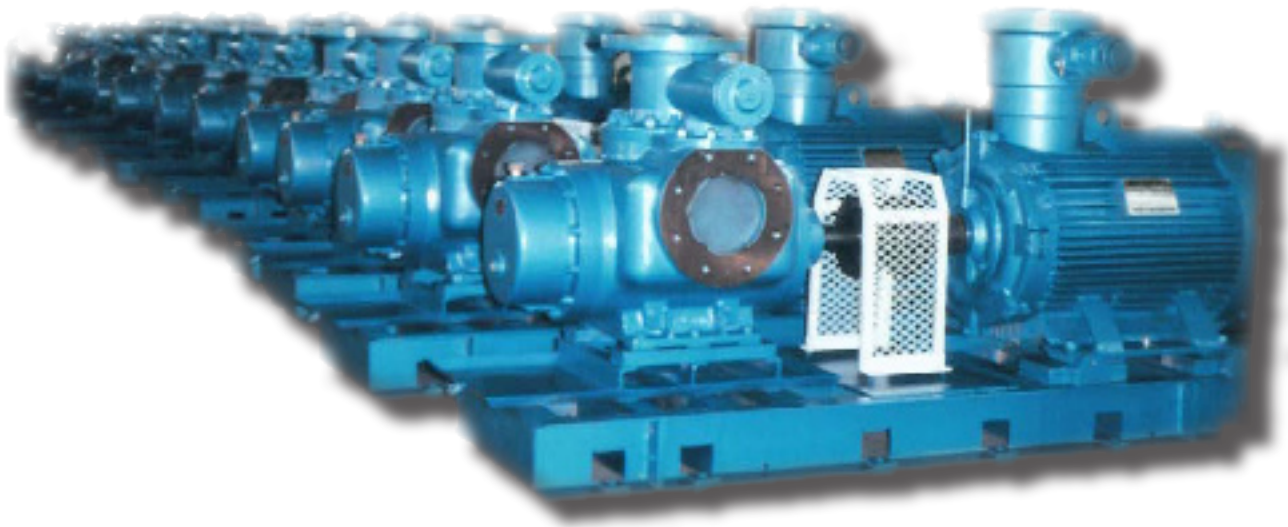
SPECIFICATIONS:

Capacity: 0 - 2000 m³/h

Pressure Range: 0 - 40 bar

Viscosity: 0 - 3x1000000 cst

Max Temperature: 280 Deg C



Head Office:

6120 Davies Road
Edmonton, AB
T6E 4M9

Phone: (780) 485-2010 • Toll Free: (866) 707-7867

Fax: (780) 485-1938

• Calgary • Drayton Valley • Lethbridge

www.rotatingright.com