



# Weatherford®

Industrial Pumps  
ISO 9001

# 2040SC-GR

Triplex Plunger Pump

### Specifications:

Stroke Length: mm (Inches) 60 (2.362)  
2.88 : 1

### Maximum discharge working pressure: bar (psi)

57MM Plunger 216 (3135)  
42MM Plunger 226 (3500)  
38MM Plunger 283 (4100)

### Rated power at max. flow and pressure: kw (hp)

57MM Plunger 74 (99)  
42MM Plunger 72 (97)  
38MM Plunger 71 (96)

### Connections:

Suction Port 2-1/4" NPT  
Discharge Port 1-1/2" NPT

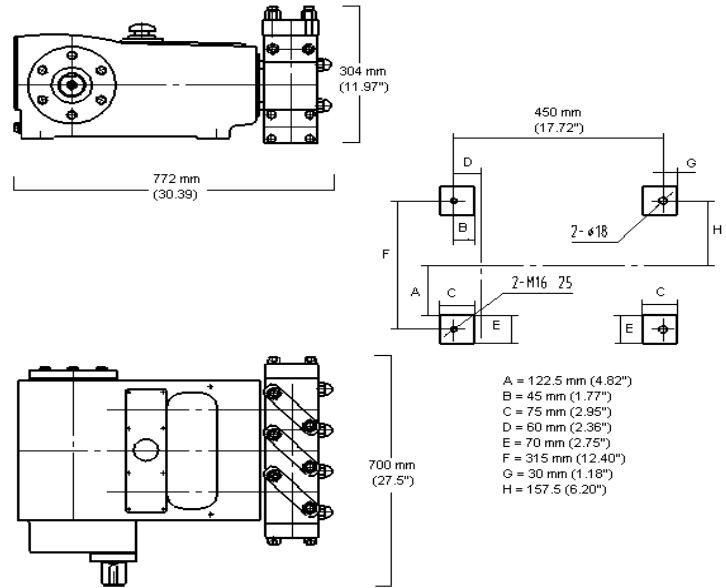
Crankshaft diameter: 50 mm

Oil capacity: liters (gallons)  
Crankcase 6 (1.6)

Weight: Kg (lbs)  
Pump only 283 (625)

### Optional accessories:

Hydraulic motor mount  
Piston cup packing w/ liner



NOTE: Dimensional information provided as a reference only.  
Please consult factory for certified drawings.

Plgr. Dia.		LPR	GPR	Max Pres.		1650 RPM		1700 RPM		1750 RPM		1800 RPM		1850 RPM		1875 RPM	
mm	in			BAR	PSI	LPM	GPM	LPM	GPM	LPM	GPM	LPM	GPM	LPM	GPM	LPM	GPM
46	1.811	0.1037	0.0274	208	3000	171	45	176	47	182	48	97	49	192	51		
42	1.654	0.0866	0.0229	226	3500	143	38	147	39	151	40	156	41	160	42	163	43
38	1.496	0.0707	0.0187	283	4100	117	31	120	32	124	33	128	34	130.5	34.5	133	36

\*Flows are based on 100% volumetric efficiency.

\*\*Pump specifications are based upon intermittent service only; consult factory for continuous duty ratings

### Features:

- \* Forged Fluid Cylinder
- \* 304SS Disc Valve Assemblies
- \* Colmonoy Coated Plungers
- \* Self-Lubricating Teflon/Kevlar Packing
- \* Cast Iron Crankcase
- \* Forged Steel Crankshaft
- \* Heavy Duty Steel Tapered Roller Bearings

$$HP = \frac{(GPM) (PSI)}{1543}$$

$$KW = \frac{(lpm) (bar)}{540}$$



Head Office:  
6120 Davies Road  
Edmonton, AB  
T6E 4M9

Phone: (780) 485-2010 • Toll Free: (866) 707-7867  
Fax: (780) 485-1938  
• Calgary • Drayton Valley • Lethbridge  
www.rotatingright.com