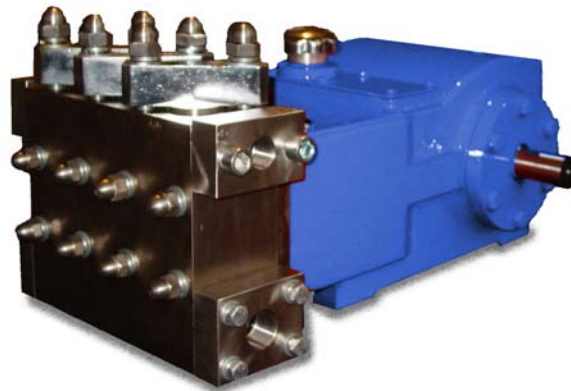


# Triplex Power Pump

The Weatherford Model T5 is a single acting triplex plunger pump rated at 4.8 HP in continuous duty services and up to 7.6 HP in intermittent duty. This versatile pump is offered with a variety of material and design options that make it ideal for general industrial, reverse osmosis, and typical applications involved in the production of oil and natural gas.



## Specifications

	<b>Continuous</b>	<b>Intermittent</b>
Rated Power .....	4.8 HP	7.6 HP
Maximum Speed .....	280 RPM	450 RPM
Minimum Speed .....	90 RPM	75 RPM

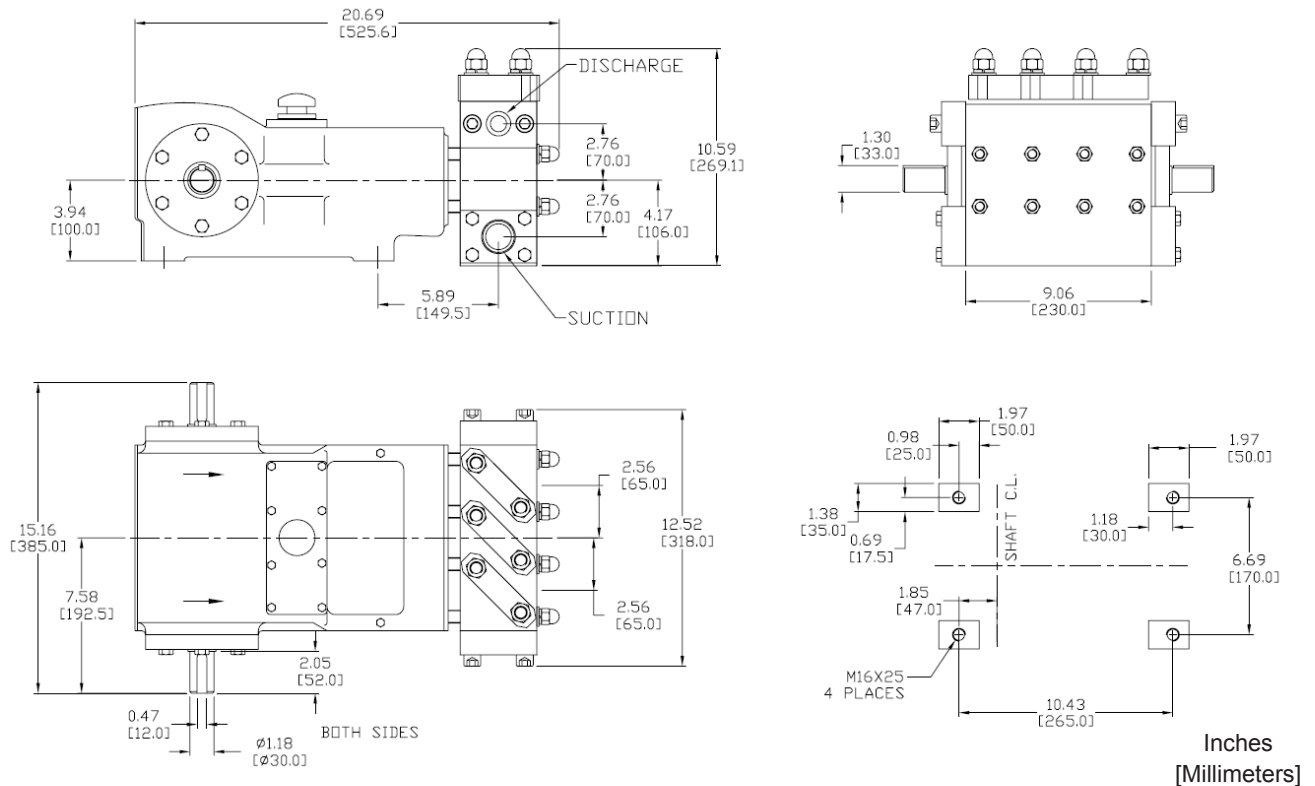
	<b>US Customary</b>	<b>Metric</b>
Stroke Length .....	1.378 IN	35 MM
Rated Rod Load .....	1,450 LB	660 KG
Pump Weight .....	210 LB	105 KG
Oil Capacity .....	2.1 QT	2 L
Maximum Fluid Temp. ....	180°F	82°C
Mechanical Efficiency .....	90%	

## Performance Ratings

Pump Model	Plunger Size (IN)	Displacement (Gal/Rev)	Rated Pressure (PSI)	Rated Capacity (GPM)			Fluid Cylinder	Standard Connections	
				Minimum	Continuous	Intermittent		Inlet	Discharge
T5-0.625IN	0.6250	0.0055	4,730	0.5	1.5	2.5	A	1-1/2" NPT	1" NPT
T5-0.6875IN	0.6875	0.0066	3,910	0.6	1.9	3.0	A	1-1/2" NPT	1" NPT
T5-0.750IN	0.7500	0.0079	3,280	0.7	2.2	3.6	A	1-1/2" NPT	1" NPT
T5-0.875IN	0.8750	0.0108	2,410	1.0	3.0	4.8	A	1-1/2" NPT	1" NPT
T5-1.000IN	1.0000	0.0141	1,850	1.3	3.9	6.3	B	1-1/2" NPT	1" NPT
T5-1.125IN	1.1250	0.0178	1,460	1.6	5.0	8.0	B	1-1/2" NPT	1" NPT
T5-1.250IN	1.2500	0.0220	1,200	2.0	6.1	9.9	B	1-1/2" NPT	1" NPT
T5-1.375IN	1.3750	0.0266	1,000	2.4	7.4	12.0	C	1-1/2" NPT	1" NPT
T5-1.500IN	1.5000	0.0316	820	2.8	8.9	14.2	C	1-1/2" NPT	1" NPT

# Model T5

## General Dimensions



Power Required:  $HP = \frac{GPM \times PSI}{1543}$

Note:

1. Capacities shown based on 100% volumetric efficiency. Actual capacities will be lower based on discharge pressures and fluid properties.
2. Maximum continuous and intermittent duty speeds are based on pumping fluids with viscosities similar to water. Consult Weatherford for speed de-rating guidelines for higher viscosity fluids.
3. Drawings shown are typical and should not be used for fabrication purposes.
4. Special designs and materials available for higher temperature operation.
5. Standard models shown. Other sizes and configurations may be available on request. Not all plunger sizes may be available in all materials. Consult Weatherford for more details.



**Weatherford**

Weatherford International, Ltd.



**Head Office:**  
6120 Davies Road  
Edmonton, AB  
T6E 4M9

Phone: (780) 485-2010 • Toll Free: (866) 707-7867  
Fax: (780) 485-1938  
• Calgary • Drayton Valley • Lloydminster  
[www.rotatingright.com](http://www.rotatingright.com)