

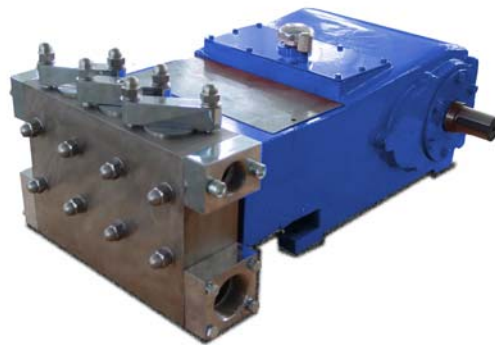
Triplex Power Pump

The Weatherford Model T25 is a single acting triplex plunger pump rated at 23 HP in continuous duty services and up to 34 HP in intermittent duty. This versatile pump is offered with a variety of material and design options that make it ideal for general industrial, reverse osmosis, and typical applications involved in the production of oil and natural gas.

Specifications

	Continuous	Intermittent
Rated Power	23 HP	34 HP
Maximum Speed	280 RPM	420 RPM
Minimum Speed	90 RPM	75 RPM

	US Customary	Metric
Stroke Length	2.362 IN	60 MM
Rated Rod Load	3,975 LB	1,807 KG
Pump Weight	615 LB	280 KG
Oil Capacity	9 QT	8.5 L
Maximum Fluid Temp.	180°F	82°C
Mechanical Efficiency	90%	

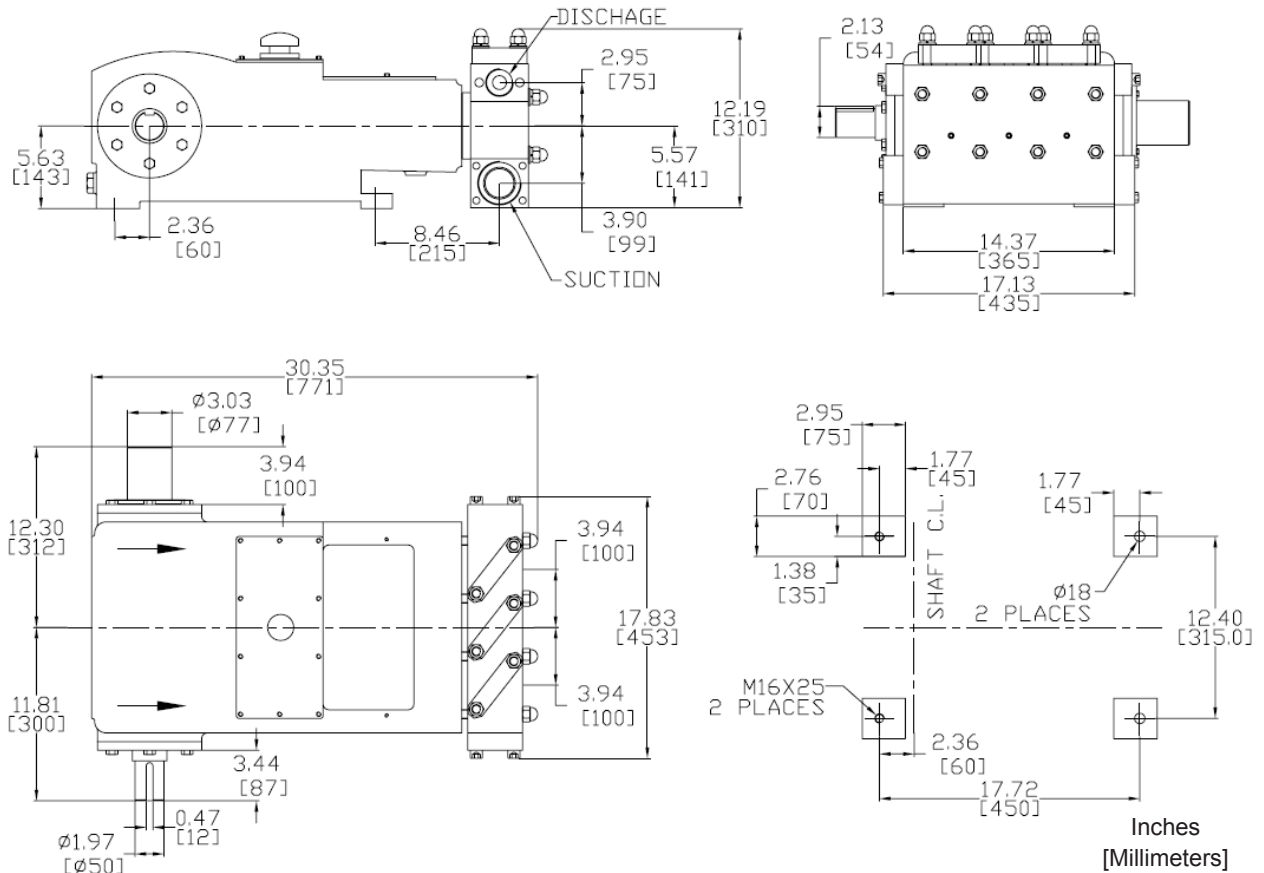


Performance Ratings

Pump Model	Plunger Size (IN)	Displacement (Gal/Rev)	Rated Pressure (PSI)	Rated Capacity (GPM)			Fluid Cylinder	Standard Connections	
				Minimum	Continuous	Intermittent		Inlet	Discharge
T25-1.000IN	1	0.0241	5,060	2.2	6.7	10.1	A	1-1/2" NPT	1" NPT
T25-1.250IN	1.25	0.0376	3,240	3.4	10.5	15.8	B	2" NPT	1" NPT
T25-1.500IN	1.5	0.0542	2,250	4.9	15.2	22.8	C	2" NPT	1" NPT
T25-1.750IN	1.75	0.0738	1,650	6.6	20.7	31.0	C	2" NPT	1" NPT
T25-2.000IN	2	0.0964	1,270	8.7	27.0	40.5	D	3" NPT	1-1/2" NPT
T25-2.250IN	2.25	0.1220	1,000	11.0	34.2	51.2	D	3" NPT	1-1/2" NPT
T25-2.500IN	2.5	0.1506	810	13.6	42.2	63.2	D	3" NPT	1-1/2" NPT
T25-2.750IN	2.75	0.1822	670	16.4	51.0	76.5	D	3" NPT	1-1/2" NPT

Model T25

General Dimensions



Power Required: $HP = \frac{GPM \times PSI}{1543}$

Note:

1. Capacities shown based on 100% volumetric efficiency. Actual capacities will be lower based on discharge pressures and fluid properties.
2. Maximum continuous and intermittent duty speeds are based on pumping fluids with viscosities similar to water. Consult Weatherford for speed de-rating guidelines for higher viscosity fluids.
3. Drawings shown are typical and should not be used for fabrication purposes.
4. Special designs and materials available for higher temperature operation.
5. Standard models shown. Other sizes and configurations may be available on request. Not all plunger sizes may be available in all materials. Consult Weatherford for more details.



Weatherford

Weatherford International, Ltd.



Head Office:
6120 Davies Road
Edmonton, AB
T6E 4M9

Phone: (780) 485-2010 • Toll Free: (866) 707-7867
Fax: (780) 485-1938
• Calgary • Drayton Valley • Lloydminster
www.rotatingright.com