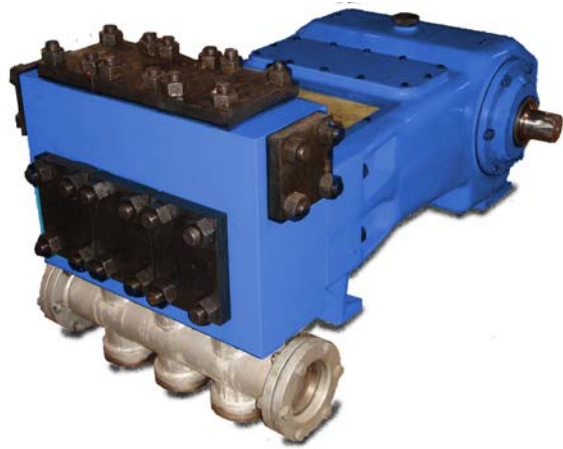


# Triplex Power Pump

The Weatherford Model T45 is a single acting triplex plunger pump rated at 43 HP in continuous duty services and up to 50 HP in intermittent duty. This versatile pump is offered with a variety of material and design options that make it ideal for general industrial, reverse osmosis, and typical applications involved in the production of oil and natural gas.



## Specifications

	<b>Continuous</b>	<b>Intermittent</b>
Rated Power.....	43 HP	50 HP
Maximum Speed.....	375 RPM	440 RPM
Minimum Speed.....	100 RPM	80 RPM

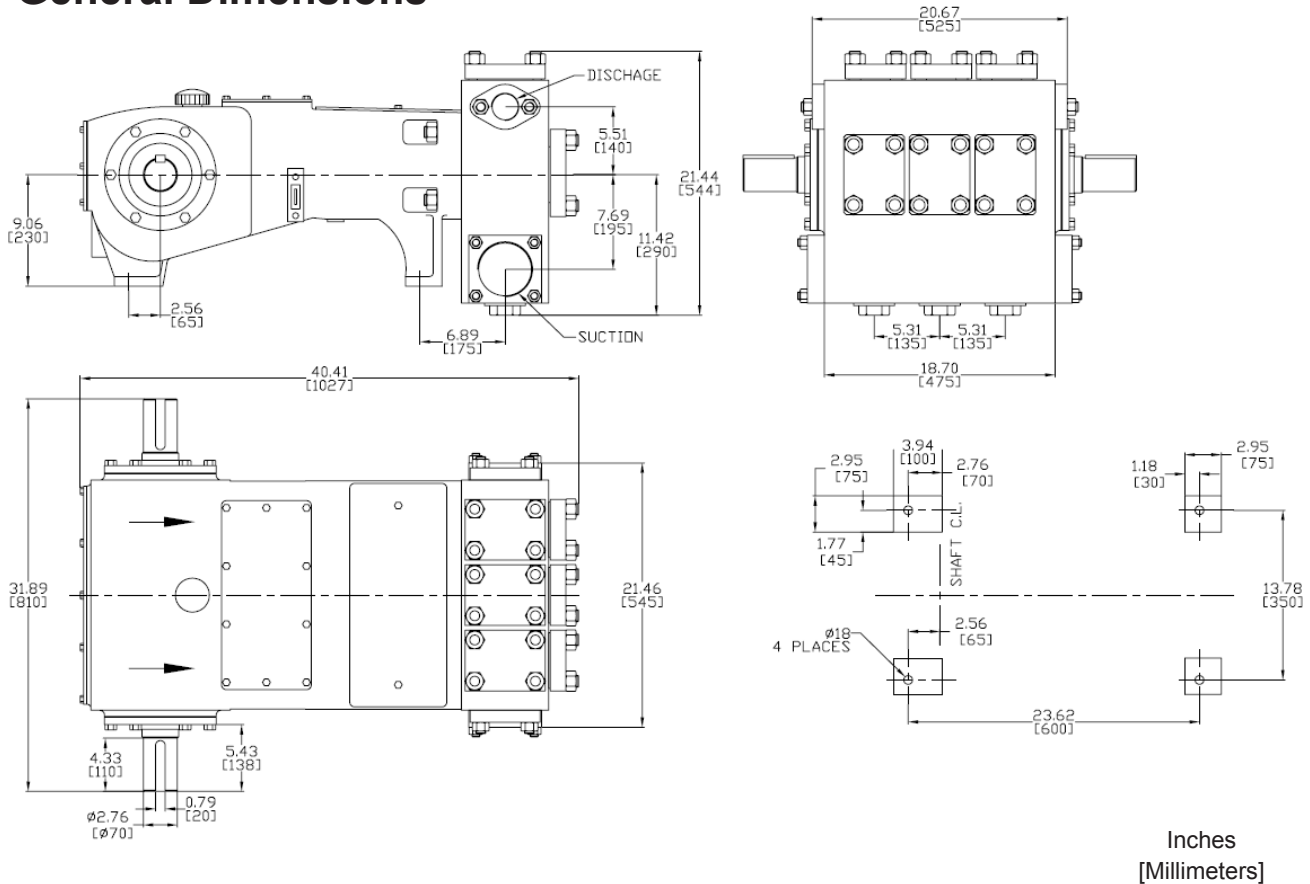
	<b>US Customary</b>	<b>Metric</b>
Stroke Length .....	2.953 IN	75 MM
Rated Rod Load.....	4,545 LB	2,065 KG
Pump Weight .....	1,320 LB	600 KG
Oil Capacity .....	14.8 QT	14 L
Maximum Fluid Temp.....	180°F	82°C
Mechanical Efficiency .....	90%	

## Performance Ratings

Pump Model	Plunger Size (IN)	Displacement (Gal/Rev)	Rated Pressure (PSI)	Rated Capacity (GPM)			Fluid Cylinder	Standard Connections	
				Minimum	Continuous	Intermittent		Inlet	Discharge
T45-1.000IN	1	0.0301	5,790	3.01	11.29	13.25	A	1-1/2" NPT	1" NPT
T45-1.125IN	1.125	0.0381	4,570	3.81	14.29	16.77	A	1-1/2" NPT	1" NPT
T45-1.375IN	1.375	0.0569	3,060	5.69	21.35	25.05	B	2-1/2" NPT	1-1/2" NPT
T45-1.500IN	1.5	0.0678	2,570	6.78	25.41	29.82	B	2-1/2" NPT	1-1/2" NPT
T45-1.750IN	1.75	0.0922	1,890	9.22	34.59	40.58	C	3" NPT	1-1/2" NPT
T45-2.000IN	2	0.1205	1,450	12.05	45.18	53.01	C	3" NPT	1-1/2" NPT
T45-2.250IN	2.25	0.1525	1,140	15.25	57.18	67.09	C	3" NPT	1-1/2" NPT
T45-2.375IN	2.375	0.1699	1,030	16.99	63.71	74.75	C	3" NPT	1-1/2" NPT
T45-2.500IN	2.5	0.1882	930	18.82	70.59	82.82	D	4" NPT	2" NPT
T45-2.750IN	2.75	0.2278	770	22.78	85.41	100.22	D	4" NPT	2" NPT

# Model T45

## General Dimensions



Power Required:  $HP = \frac{GPM \times PSI}{1543}$

Note:

1. Capacities shown based on 100% volumetric efficiency. Actual capacities will be lower based on discharge pressures and fluid properties.
2. Maximum continuous and intermittent duty speeds are based on pumping fluids with viscosities similar to water. Consult Weatherford for speed de-rating guidelines for higher viscosity fluids.
3. Drawings shown are typical and should not be used for fabrication purposes.
4. Special designs and materials available for higher temperature operation.
5. Standard models shown. Other sizes and configurations may be available on request. Not all plunger sizes may be available in all materials. Consult Weatherford for more details.



**Weatherford**

Weatherford International, Ltd.



**Head Office:**  
 6120 Davies Road  
 Edmonton, AB  
 T6E 4M9

Phone: (780) 485-2010 • Toll Free: (866) 707-7867  
 Fax: (780) 485-1938  
 • Calgary • Drayton Valley • Lloydminster  
[www.rotatingright.com](http://www.rotatingright.com)