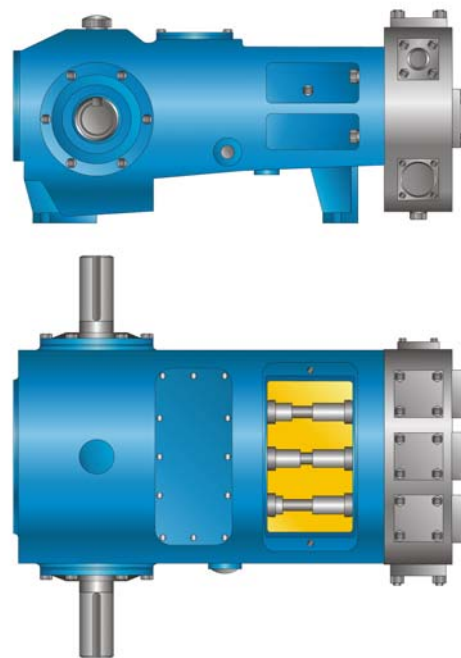


Triplex Power Pump

The Weatherford Model T70 is a single acting triplex plunger pump rated at 69 HP in continuous duty services and up to 83 HP in intermittent duty. This versatile pump is offered with a variety of material and design options that make it ideal for general industrial, reverse osmosis, and typical applications involved in the production of oil and natural gas.

Specifications

	Continuous	Intermittent
Rated Power	69 HP	83 HP
Maximum Speed	335 RPM	400 RPM
Minimum Speed	100 RPM	80 RPM
	US Customary	Metric
Stroke Length	3.937 IN	100 MM
Rated Rod Load	6,210 LB	2,800 KG
Pump Weight	2,525 LB	1,150 KG
Oil Capacity	27.5 QT	26 L
Maximum Fluid Temp.	180°F	82°C
Mechanical Efficiency	90%	

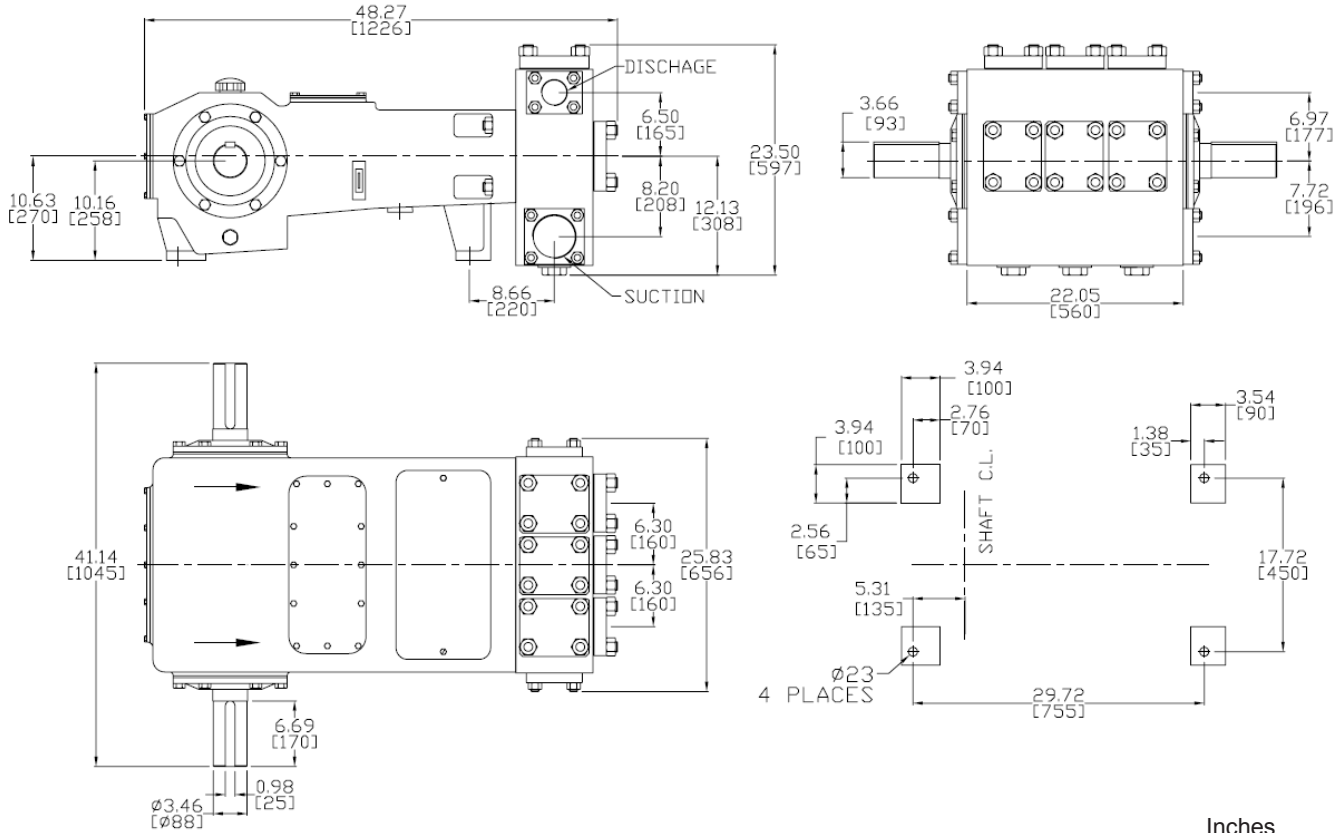


Performance Ratings

Pump Model	Plunger Size (IN)	Displacement (Gal/Rev)	Rated Pressure (PSI)	Rated Capacity (GPM)			Fluid Cylinder	Standard Connections	
				Minimum	Continuous	Intermittent		Inlet	Discharge
T70-1.125IN	1.125	0.0508	6,250	5.1	17.0	20.3	A	2" NPT	1" NPT
T70-1.375IN	1.375	0.0759	4,180	7.6	25.4	30.4	A	2" NPT	1" NPT
T70-1.500IN	1.5	0.0904	3,510	9.0	30.3	36.1	B	3" NPT	1-1/2" NPT
T70-1.750IN	1.75	0.1230	2,580	12.3	41.2	49.2	B	3" NPT	1-1/2" NPT
T70-2.000IN	2	0.1606	1,980	16.1	53.8	64.3	B	3" NPT	1-1/2" NPT
T70-2.125IN	2.125	0.1813	1,750	18.1	60.7	72.5	C	4" NPT	2" NPT
T70-2.250IN	2.25	0.2033	1,560	20.3	68.1	81.3	C	4" NPT	2" NPT
T70-2.500IN	2.5	0.2510	1,270	25.1	84.1	100.4	C	4" NPT	2" NPT
T70-2.750IN	2.75	0.3037	1,050	30.4	101.7	121.5	C	4" NPT	2" NPT
T70-3.000IN	3	0.3614	880	36.1	121.1	144.6	D	6" CL150 RF	3" NPT
T70-3.250IN	3.25	0.4242	750	42.4	142.1	169.7	D	6" CL150 RF	3" NPT
T70-3.375IN	3.375	0.4574	690	45.7	153.2	183.0	D	6" CL150 RF	3" NPT

Model T70

General Dimensions



Inches
[Millimeters]

Power Required: $HP = \frac{GPM \times PSI}{1543}$

Note:

1. Capacities shown based on 100% volumetric efficiency. Actual capacities will be lower based on discharge pressures and fluid properties.
2. Maximum continuous and intermittent duty speeds are based on pumping fluids with viscosities similar to water. Consult Weatherford for speed de-rating guidelines for higher viscosity fluids.
3. Drawings shown are typical and should not be used for fabrication purposes.
4. Special designs and materials available for higher temperature operation.
5. Standard models shown. Other sizes and configurations may be available on request. Not all plunger sizes may be available in all materials. Consult Weatherford for more details.



Weatherford

Weatherford International, Ltd.



Head Office:
6120 Davies Road
Edmonton, AB
T6E 4M9

Phone: (780) 485-2010 • Toll Free: (866) 707-7867
Fax: (780) 485-1938
• Calgary • Drayton Valley • Lloydminster
www.rotatingright.com